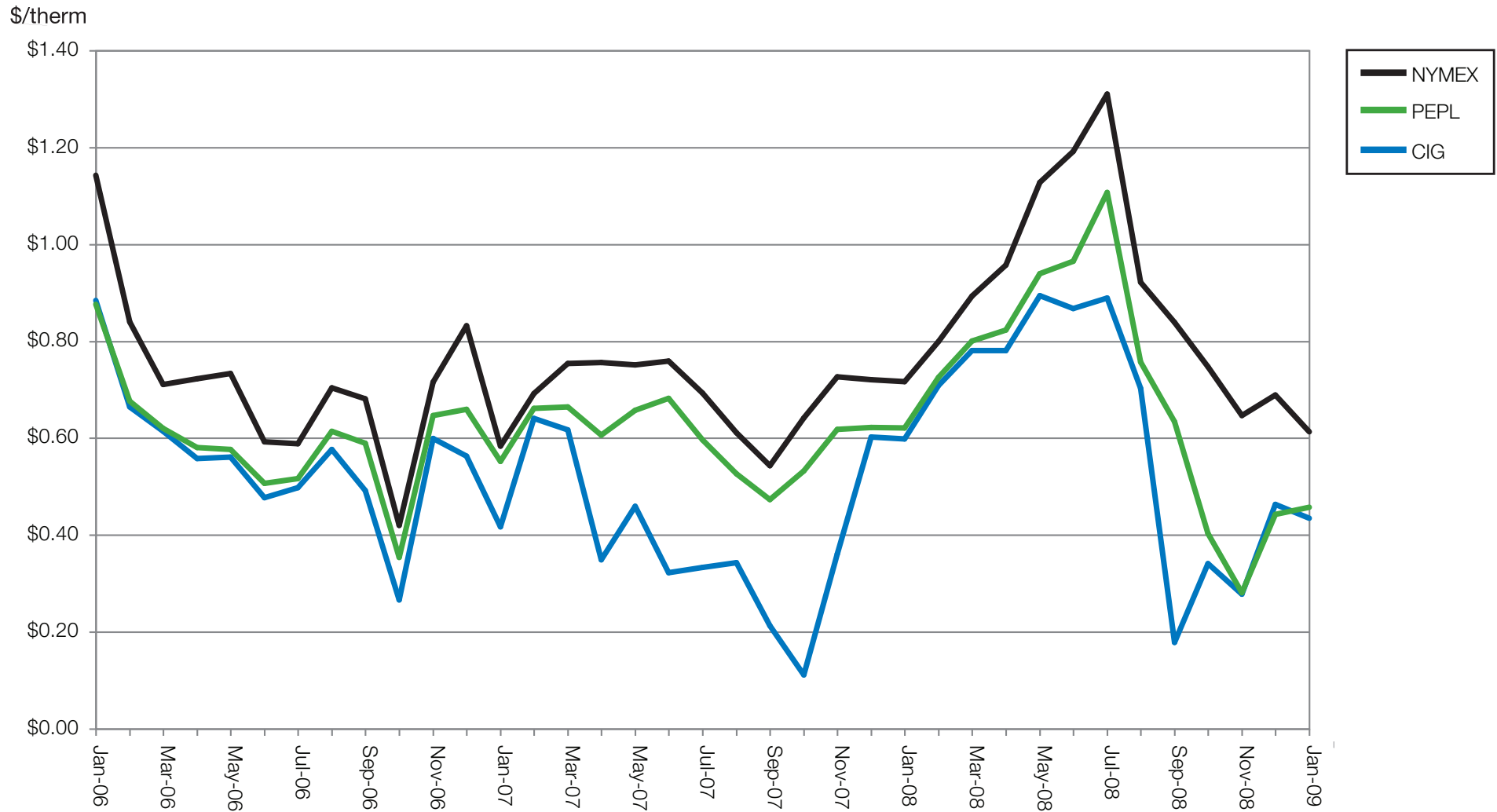


COMPARING INDEX PRICING OPTIONS

NYMEX, PEPL and CIG

January 2006 through January 2009



Nymex is the monthly settlement of New York Mercantile Exchange Henry Hub natural gas futures (www.nymex.com). PEPL is the monthly index of Panhandle Eastern Pipe Line Co. - Texas, Oklahoma (mainline) and CIG is the monthly index of Colorado Interstate Gas Co. - Rocky Mountains, both published in Platt's Inside FERC Gas Market Report (www.platts.com). Prices exclude upstream transportation, fuel and hedging costs (collectively known as the "adder") for delivery to SourceGas customers. This chart is for illustrative purposes only. SourceGas Energy Services ("SGES") does not make any representation or warranty (express or implied) as to the accuracy or validity and assume no responsibility for data contained herein. Past performance is not indicative of future results.